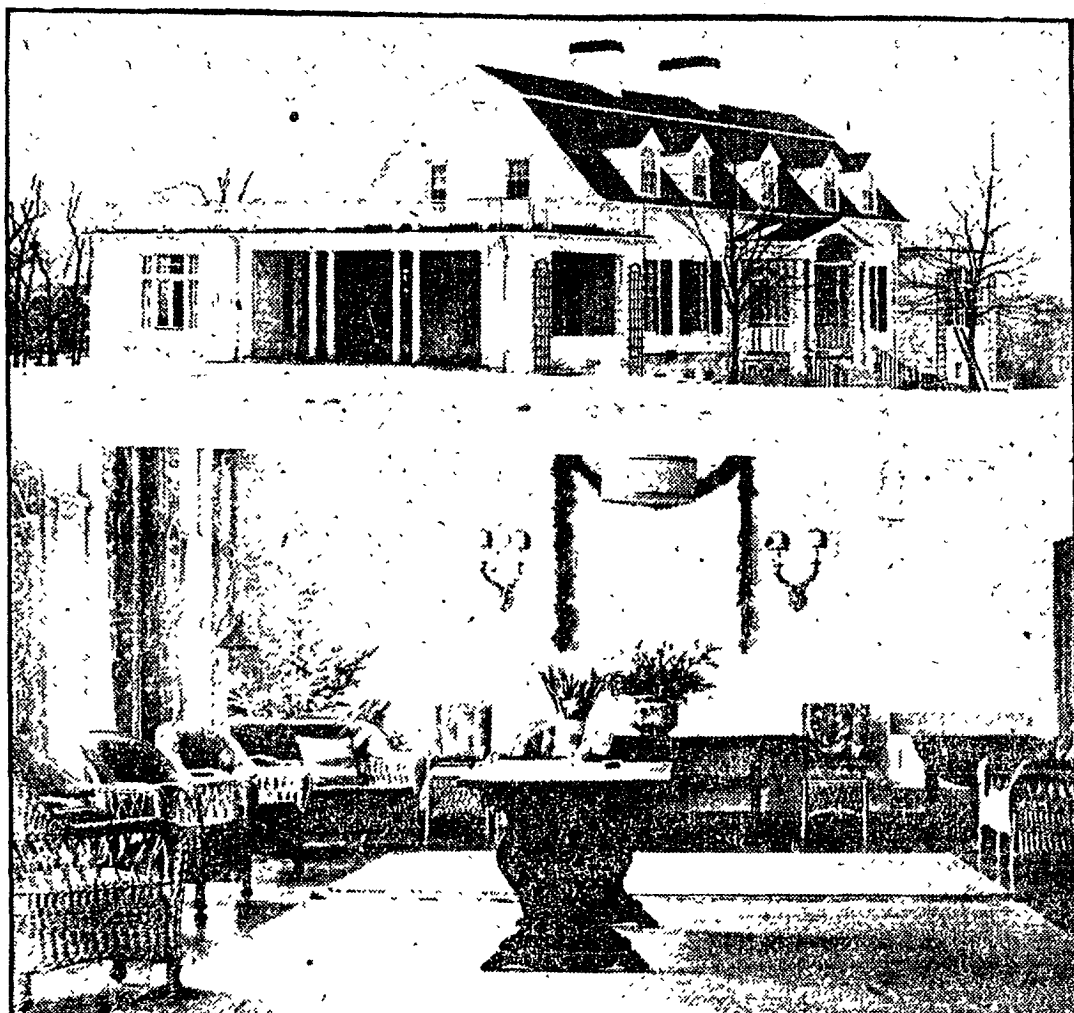


DEDHAM COUNTRY AND POLO CLUB OPENS ITS SPLENDID NEW CLUBHOUSE



CLUBHOUSE OF DEDHAM COUNTRY AND POLO CLUB.
Upper Picture Shows Beautiful New Colonial Structure. Lower, the Clubroom.

Special Dispatch to the Globe
DEDHAM, Jan 3.—The Dedham Country and Polo Club has opened its new clubhouse on Westfield st. Three years ago the original clubhouse, built by the charter members of the club, was destroyed by fire. The new building, one of the most beautiful country clubhouses in New England, has been in the course of erection for two years.
The situation of the new club house is admirable. For miles the valley of the Charles River stretches out below and from the large veranda on the second story many miles of the Dedham

countryside may be seen. On a clear day the summit of Mt Wachuset is visible. The fairways of the golf course and the polo grounds are around the clubhouse. The polo grounds are in such a position that spectators on the veranda can watch the games.
The building itself has all the features of a modern country club. It is built in colonial style, with two stories. The approaches to the building are broad roads, passing through finely graded lawns.
The building committee, when it first started to work on the plans, took into consideration the value of the clubhouse as a social center as much as a house for golfers and polo players. As a result the house has several large

reception rooms. The greater part of the second floor is given over to a reception room for the women members of the club. The rest of the second floor is devoted to locker rooms and shower baths.
On the first floor there is a large clubroom and grill, a spacious reception room and a parlor. All the rooms are beautifully decorated, many of them being done in carved wood.
In the basement are the golf lockers and kitchens. A feature of the basement, not found in every country club, is a large rest room for drivers. The personal employes of the members, who in most cases must wait outside the clubhouse, have a large room to themselves.